



Protecting Special Lands in Lane and Douglas County

CURRENTS

Spring/Summer 2010

- [2 Green Island Program Update](#)
- [2 MRT Accreditation](#)
- [3 Thank You Volunteers!](#)
- [4 Upcoming Events](#)
- [4 Living River Celebration](#)
- [5 MRT Conservation Map](#)
- [6 President's Message](#)
- [7 New Staff and Board Members](#)



Landowner Helen Hollyer admiring the threatened Kincaid's lupine

Leaving a Legacy - Hollyer Prairie

CAMAS SWALE – CRESWELL

Lavender spikes of common camas blanketed the swale and clumps of Oregon tough-leaved iris dotted the higher elevation meadows with blooms ranging from pale violet to deep purple in May 1993 when I first saw the land that I named Illahe Farm.

From the knoll that became my home site, I looked east across the Camas Swale Valley to the Low

Cascades overtopped by the pristine white peaks of the Three Sisters silhouetted against a cloud-free blue sky.

I knew immediately that this 87 acres of land was special — just how special, I've been learning during the ensuing 17 years that I've lived on it.

Continued on page 7.



The Berggren Watershed Conservation Area

Growing the Big Island Complex

MCKENZIE RIVER – BERGGREN WATERSHED CONSERVATION AREA

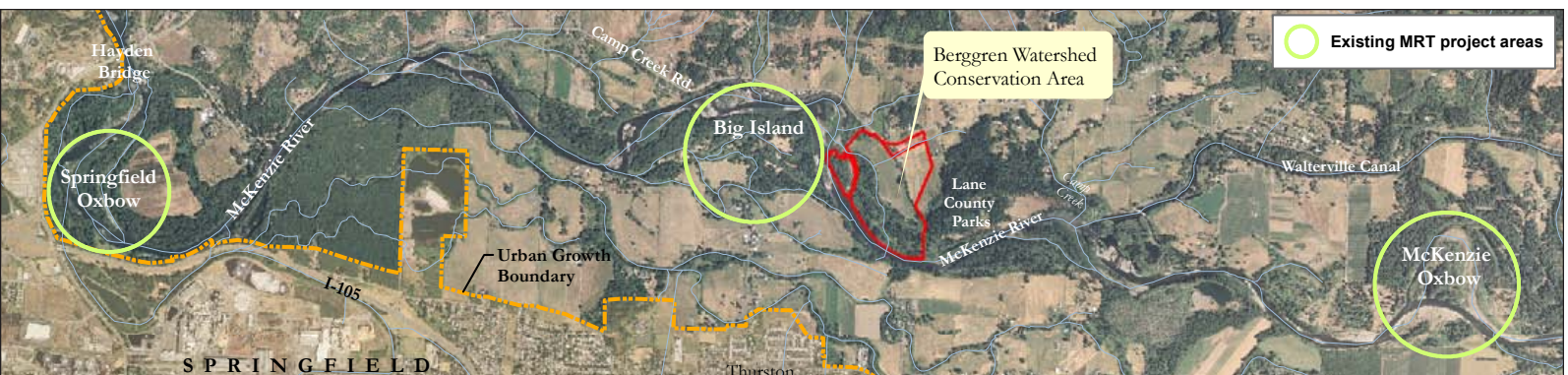
The Trust is excited to announce that we are in the process of acquiring a 92-acre property upstream and across from Big Island, another property protected by MRT in 2001. The property has been owned by Richard and Sandra Hunsaker of Walterville since 2002.

The property is being named in honor of Randy Berggren, the recently retired Eugene Water &

Electric Board General Manager. Berggren was a strong supporter of river conservation efforts during his 24-year career with EWEB.

A refuge for juvenile Chinook, Oregon chub, great blue herons, osprey, beaver, and numerous other riparian species, the property contains many river features that create and sustain dynamic, healthy

Continued on page 3.



The BWCA acquisition builds on previous MRT protection activity along this critical stretch of the McKenzie River.

Excellence, Trust, Permanence



After an extensive internal and external

review process, the McKenzie River Trust was recently awarded accreditation by the Land Trust Accreditation Commission, an independent program of the Land Trust Alliance. Accredited land trusts must meet national standards for excellence, uphold the public trust, and ensure that conservation efforts are permanent. MRT joins 92 other land trusts in the U.S. that have earned this distinction to date. Accreditation helps ensure both the long term benefits of our work here in western Oregon and the strength of the land trust movement across the country and across generations.

You can learn more about the Land Trust Accreditation program by visiting www.landtrustaccreditation.org

Milestone Reached on Green Island

In the years that the Trust has been working out on Green Island, April and May usually have been slower months. The weather is always a mix of sleet, rain, and sunshine. The ospreys have returned to their nests, the trees are budding, and grass grows by the foot. Until things dry out there is not much activity in terms of restoration.

This year was a milestone exception. Fifty-ton trucks, excavators, and bulldozers were busy removing the property's largest man-made obstruction to the floodplain. Constructed by the Greens after the 1964 flood, the levee on the northwestern edge of the main island was erected to prevent flood waters from inundating the agricultural fields. Separating three hundred acres of floodplain from a side channel of the Willamette River, the levee was 1,685 feet in length (that's 4.5 football fields) with an average

height of five feet. It contained enough dirt and rock to fill three Olympic size swimming pools. The removal of the levee will now permit bankfull and higher flood events to dissipate water onto the floodplain. Floodplains serve critical functions to the ecosystem. During flood events floodplains hold water, and then slowly release it into the river and groundwater aquifers. This process can reduce erosion of the riverbanks, settle sediments, and provide unique habitats for both terrestrial and aquatic flora and fauna.

This winter, the site will be planted with native grasses, shrubs, and trees. The levee removal project was made possible by funding from the Bonneville Power Administration and the Trout Unlimited McKenzie-Upper Willamette Chapter 678.

-By Chris Vogel,
Green Island Project Manager



Levee removal



After levee removal

Volunteer Tree Plantings



OSU Fish & Wildlife Club volunteers



OSU Lutheran Campus Ministry volunteers



Cub Scouts Pack 24 & 74 volunteers

MRT would like to thank all the dedicated volunteers that assisted with tree plantings. We enjoyed full sun on all events this year! Thanks again to the OSU Lutheran Campus Ministry, OSU Fish & Wildlife Club, and Cub Scouts Pack 24 and 74.

Volunteers have been busy on MRT properties.



Blue River Riverwalk Volunteers

By partnering with the McKenzie Watershed Council we were able to combine our easement and owned property stewardship needs with the Council's 2010 outreach and education initiatives and complete three stewardship projects.

Springfield High School's Youth Day of Caring brought 18 students to volunteer on Big Island, a floodplain property along the McKenzie River owned and protected by the Trust. The students grabbed shovels and waders, dug up and removed invasive weeds, and staked and marked newly planted riparian trees.

MRT partnered with the McKenzie Watershed Council

and the McKenzie Area Renewal Committee (MARC) on the Blue River Riverwalk project. Hardy volunteers and staff members gathered to shovel gravel, pull English Ivy, and avoid poison oak for this trail and weed removal project along the bank of Blue River. Way to make things happen in your community MARC!

McKenzie High School students spent a day removing English ivy on an MRT conservation easement, a forested parcel that overlooks the town of Blue River. This easement protects the hillside from clear-cuts and conserves the aesthetic, scenic values for the town and its visitors. This outstanding volunteer effort by the students helped the private landowners control an invasive weed, helped the McKenzie River Trust with stewardship, and assisted the community of Blue River.

Thank You Volunteers!

-by Jodi Lemmer, Land Steward

Consider the McKenzie River Trust in your Estate Planning

Make a lasting impact that will forever preserve our natural lands in Western Oregon. By including the McKenzie River Trust in your estate plans you can help protect the places you love and ensure our work will continue for generations to come. Contact your financial advisor, or MRT for more information.



Growing the Big Island Complex *continued from page 1*

rivers: intricate side channels, subsurface gravel deposits, large wood masses, beaver ponds, and a floodplain that connects to the river on a regular basis. The property will be protected forever for its water quality enhancement and riparian wildlife habitat values.

The Trust will work with its EWEB, McKenzie Watershed Council, and ODFW partners to enhance riparian bottomland forest conditions in some areas and re-establish them in other areas.

In addition, EWEB will lead an effort to establish a sustainable floodplain demonstration farm on about 30 acres of the property. This watershed community outreach and education project will showcase low-impact farm practices, coupled with market-responsive production and market opportunities in a way that is sensitive to the land's floodplain context.

Bonneville Power Administration and EWEB are funding the acquisition of the Berggren

Watershed Conservation Area, partly to mitigate for the impacts of the Willamette Valley Project and McKenzie River dams. This acquisition represents the culmination of a long-term effort by the Trust to build on its earlier successes at Big Island.

-By Ryan Ruggiero,
Land Protection Manager



Living River series concludes celebration of the Trust's 20th anniversary

UPCOMING EVENTS

Dragonfly and Butterfly Tour on Green Island

Sunday, July 18th at 10am
To RSVP call 541-345-2799

Eugene Celebration Parade

The MRT papier-mâché fish will be migrating down the parade route once again on
Saturday, August 28th

Two-Fly Tournament

Join us on Saturday, September 25th for the third annual fundraising event organized by the Caddis Fly Angling Shop and the McKenzie-Willamette Chapter of Trout Unlimited

Mount Pisgah Mushroom Festival

Come visit us at our booth on Sunday, October 31st
10am-5pm

Go to www.mckenzieriver.org for info on upcoming events.

Thank You

- to all of our volunteer tour guides: Kit Larsen, Roger Robb, Bruce Newhouse, Peg Boulay, Steve Gordon and Cary Kerst
- to our Volunteer Living River Committee members: Christie McDonald, Jessica Reichman and Mary Sooh



The Living River Juried Art Exhibit, held in April at the Hult Center's Jacobs Gallery, included more than 80 original works of art by dozens of local and regional artists on the subject of rivers and their connections to our communities. The series of Neighborhood Conversations in the Hult Center Studio brought together four experts who are deeply engaged in exploring our relationships with rivers.



Kathleen Dean Moore reading

Speakers Deborah Finn (who presented the documentary RiverWebs on behalf of Freshwaters Illustrated), architect William C. Tripp, Ken Kesey biographer Bob Faggen, and writer/philosopher Kathleen Dean Moore enlightened us to their passions and generated discussions of priorities surrounding rivers and the natural world.



Jacob's Gallery

In all, the events allowed the Trust to consider vital questions of ethics, connect with our community supporters, and reach out to new audiences who may not have known about our work.

As Executive Director Joe Moll said in his remarks to one Living River audience,

"What makes a river alive? If we look closely at all the colors and textures and flow and movement in the Living River artwork, we can't help but give more life to the river, and recommit ourselves to its conservation."

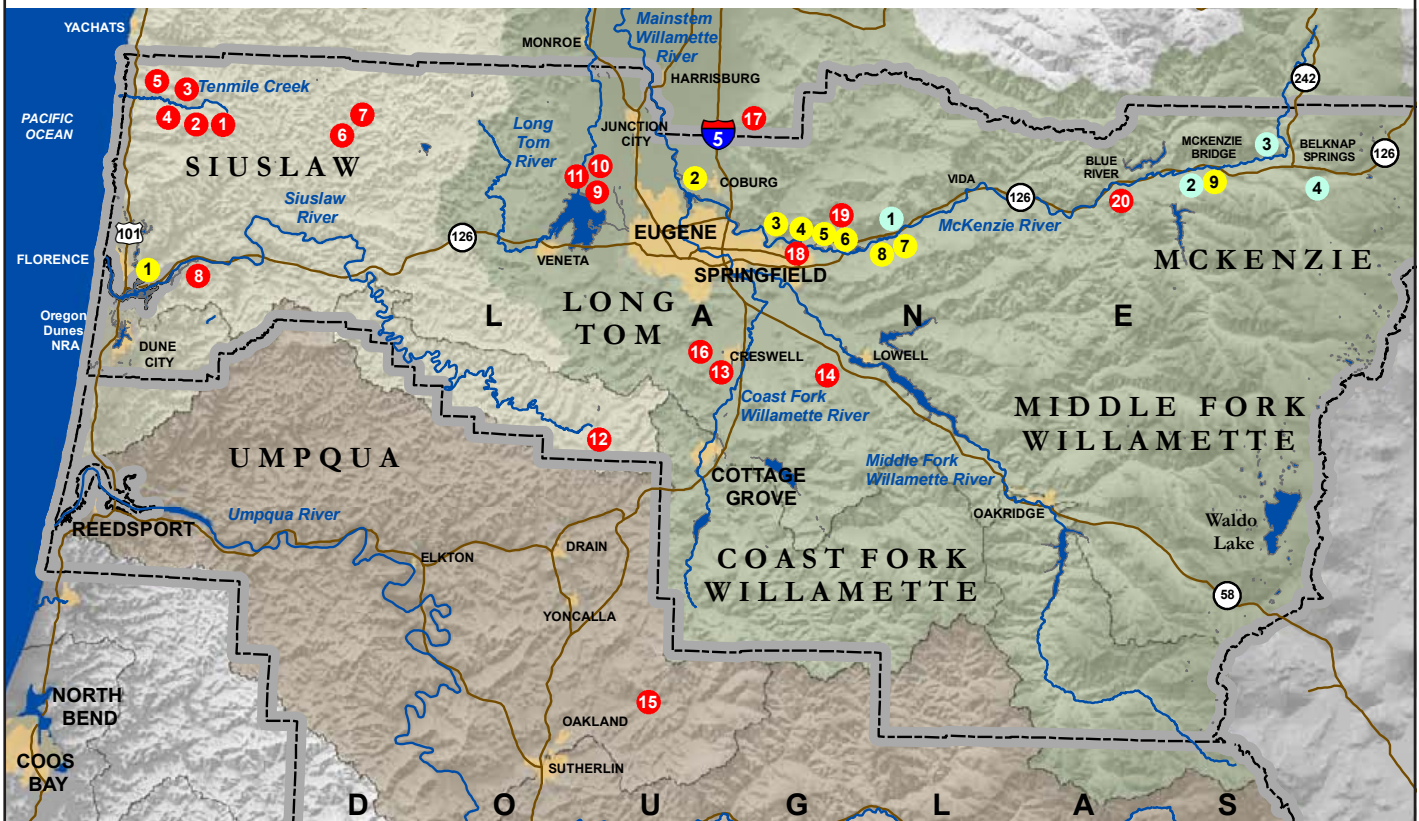
We thank you for engaging with us in the ongoing conversations that fuel our conservation work. As the Trust grows we remain committed to our roots: working with willing landowners to protect special lands, creating strategic partnerships to enhance our watershed, and developing approaches that will ensure our local living rivers are conserved for future generations. We are proud to have reached the milestone of being a 20 year old organization. With your support we can continue this work for the next twenty years, and the decades that follow.

-By Liz Lawrence,
Operations Manager

We sincerely thank our sponsors for helping to make the Living River events possible:

Freshwaters Illustrated, the Hult Center for the Performing Arts, Organically Grown Company, Pacific Continental Bank, Springfield Creamery, Bradford's Home Entertainment, Hilton Hotels, River Trail Guides, and the Jacob's Gallery.

McKenzie River Trust Conservation Map



OWNED PROPERTIES

- 1 - North Fork Marsh (29 acres)
- 2 - Green Island (1,000 acres)
- 3 - Springfield Oxbow (19 acres)
- 4 - Big Island (108 acres)
- 5 - Berggren Watershed Conservation Area (92 acres)
- 6 - McKenzie Oxbow (21 acres)
- 7 - Roberts Island (18 acres)
- 8 - Roberts Preserve (13.5 acres)
- 9 - Drury Meadow (23 acres)

Total acres owned: 1,323

PARTNER ASSISTS

- 1 - Baxter Boat Landing (7.5 acres)
- 2 - Horse Creek (25 acres)
- 3 - Smith Forest (13 acres)
- 4 - Whitebranch Creek (44 acres)

Total acres assisted on: 99

Total acres protected as of June 2010: 2,998

CONSERVATION EASEMENTS

- 1 - Pine Tree (89.7 acres)
- 2 - Shotpouch (120 acres)
- 3 - Audubon (166.7 acres)
- 4 - Willer Clement (25 acres)
- 5 - Radtke (78 acres)
- 6 - Deadwood Creek (27 acres)
- 7 - Fawn Creek (80 acres)
- 8 - Duncan Island Ranch (87 acres)
- 9 - Lower Coyote Creek (133 acres)
- 10 - Lomatium Prairie (96.4 acres)
- 11 - Coyote Swamp (30 acres)
- 12 - Forest Care (90 acres)
- 13 - Creswell Butte (72 acres)
- 14 - Wagner Creek (20 acres)
- 15 - Gill Oak (200 acres)
- 16 - Hollyer Prairie (60 acres)
- 17 - Flying Wym (140 acres)
- 18 - Grier/Pappas (11 acres)
- 19 - McKenzie Oxbow (30 acres)
- 20 - Blue River (20 acres)

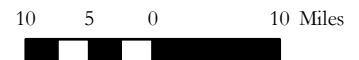
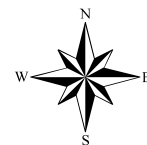
Total acres under easement: 1,578

Legend

Program Areas

- Upper Willamette
- Coastal
- Umpqua

- Major roads & highways
- Rivers, streams & lakes
- County boundaries
- Urban areas (2007)



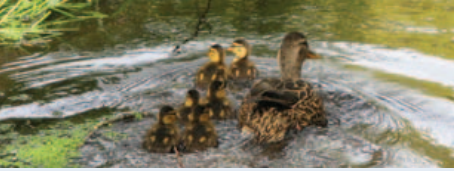
Support Your Regional Land Trust

In this issue you read about a private landowner who is leaving a legacy of stewardship through a conservation easement, and the Trust's future acquisition of a McKenzie riverfront property linked to Big Island. Your donation will allow our staff to pursue more of these critical conservation projects in Lane and Douglas Counties. Your tax deductible gift provides key funding for our operating costs, ensuring our staff is on the

ground working to protect the special lands that surround our local communities. Join us to permanently protect the natural places you value before they are gone forever.

To donate please use the envelope provided or go to www.mckenzieriver.org.

Thank you for your generous support!



President's Message

By Roger Robb, Board President



What makes a river alive? How does a river bring life to a community? These were the questions we addressed in our neighborhood conversations this past April led by Joe Moll, our Executive Director. Through these conversations it became clear that a living river is a dynamic ecosystem with clean water and abundant fish and wildlife. People are also connected to rivers in many ways, whether through the need for clean water, access to wildlife for hunting, fishing or viewing, or the enjoyment of just being with the river.

This past May I spent time in the Cotswolds of England and had the opportunity to see these same questions addressed 6,000 miles to the east. The Windrush River originates in the uplands of the Cotswolds, flowing through woodlands and fields before reaching the picturesque village of Bourton-on-the Water and continuing on to its confluence with the Thames. One sunny afternoon I met with a biologist for the Gloucestershire Wildlife Trust at their Brassey Reserve on

a tributary of the Windrush. A team was busy assessing invertebrates and invasive species and developing a strategy for the continued restoration of this rare freshwater marsh. Their objective was to ensure a healthy ecosystem with clean water for drinking and habitat for fish and wildlife. I couldn't help noting the similarities to the work of the McKenzie River Trust. Downstream in Bourton-on-the Water the Windrush is the heart of the village with river walks and footbridges. It's not pristine here, but the water is crystal clear supporting fish and wildlife. The river adds beauty and tranquility for residents and visitors alike. The Windrush River is the signature of this Cotswold village.

Our neighborhood conversations this April were heartening in confirming the value we put on clean water, fish and wildlife and natural landscapes. They were also daunting as we realize the effort required to protect and enhance our rivers for generations to come. In England I was delighted to see this commitment to the protection and enhancement of rivers carried out by a Trust and community similar to our own. I look forward to your continued support as we work together to protect special lands in Western Oregon.

Board of Directors

Roger Robb *President*
Bill Sheppard *Vice President*
Charlie Ward *Treasurer*
Kit Larsen *Secretary*
Rolf Anderson
Doug DuPriest
Neil Hutchinson
Ben Miller
Bob Parker
Galen Phipps
Jim Reichman
Paul J. Utz

Committee Members

Aryana Ferguson
Rich Gaston
Steve Gordon
David Hulse
Jean Jancaitis
Pat McDowell
Bruce Newhouse
Megan Smith
Dan Terrell

Staff

Brandi Ferguson
Development Manager
Liz Lawrence
Operations Manager
Jodi Lemmer
Land Steward
Joe Moll
Executive Director
Ryan Ruggiero
Land Protection Manager
Chris Vogel
Green Island Project Manager

1245 Pearl St.
Eugene, OR 97401
541-345-2799
541-465-3876 (fax)
mrt@mckenzieriver.org

McKenzie River Trust History

With so much rich history to print, we decided to make the second installment of the McKenzie River Trust History available on our website. Go to www.mckenzieriver.org for our full history, timeline and additional photos.



New Staff and Board Members



Liz Lawrence is excited to join the staff as the Trust's new Operations Manager. She was formerly the Living River project intern from January to June 2010. Liz holds a Graduate Certificate in Nonprofit Management from the University of Oregon. She grew up in the Maryland suburbs of

Washington DC and earned a B.A. in Studio Art with a minor in Latin American Studies from St. Mary's College of Maryland. When not at work she volunteers for MECCA: The Materials Exchange Center for Community Arts, and the Common Ground Garden. She is a bike commuter and proud backyard chicken-owner.

New Board Member

Ben Miller is an attorney with Harrang Long Gary Rudnick P.C. in Eugene. His practice focuses on defending local governments in civil litigation and enforcing air quality laws. Prior to entering the private sector Ben worked for the Oregon Department of Justice in the areas of litigation, energy, forest and water law. He holds a BS in Fisheries and Wildlife

Science from the OSU Honors College, a JD from the University of Oregon School of Law and also serves on the Board of the Northwest Habitat Institute. Ben has spent his entire life in Oregon and most weekends you can find him fishing for steelhead, snowshoeing, bird hunting, or backpacking in one of Oregon's wilderness areas.



New Board Member

Jim Reichman retired from the University of California, Santa Barbara, where he was Director of the National Center for Ecological Analysis and Synthesis, past President of the American Society of Mammalogists and Chair of the Board of Directors of BIOSIS Corporation. He served as a Program

Officer in Ecology at the National Science Foundation, as Associate Vice Provost for Research and Director of Konza Prairie at Kansas State University, and as Assistant Director for Research of the National Biological Service (Department of Interior). His interests include traveling, hiking and camping with his wife, and fly-fishing.

Leaving a Legacy - Hollyer Prairie *continued from page 1*

Recently I took the step of protecting 60 undeveloped acres in perpetuity by placing a conservation easement in favor of McKenzie River Trust, which will monitor the restoration, enhancement and preservation of the streams, wetlands, wet prairies, riparian forest, upland prairies, oak savanna and other ecological niches as habitat for native species of plants and animals.

I hope that future owners will be able to continue to share the land

with other less common Oregon residents, such as western pond turtles, red-legged frogs, Kincaid's lupine and Willamette Valley bittercress.

I've also entered into partnership with Coast Fork Willamette Watershed Council and US Fish & Wildlife Service in a long-term project to restore and enhance the wetlands and wet prairies.

We are pursuing additional funding for the project from Oregon Watershed Enhancement Board

and Department of State Lands to augment my financial resources. I am grateful to be able to leave such a legacy to future generations, and hope that other landowners, seeing the pleasure I derive from my relationship with the land and the knowledge that it will survive my demise unchanged, will consider creating legacies of their own.

-By Helen Hollyer, Landowner



1245 Pearl St.
Eugene, OR 97401

541-345-2799
mrt@mckenzieiver.org
www.mckenzieiver.org



PRINTED ON 100% POST CONSUMER
RECYCLED PAPER WITH SOY INK.



Photo by Gary Haliski



Photo by Cary Kerst



Big Island Volunteers



OUR MISSION

The McKenzie River Trust protects special lands in Lane and Douglas Counties for their habitat, water quality, and scenic values.

RAPID NEWS

- Acres owned and protected in perpetuity by MRT: 1,323 and growing!
- MRT currently protects an additional 1,528 acres through conservation easements on private lands in Lane and Douglas County.
- We recently removed a 1,685 foot long levee on Green Island.
- MRT received national accreditation from the Land Trust Accreditation Commission.



Umpqua River